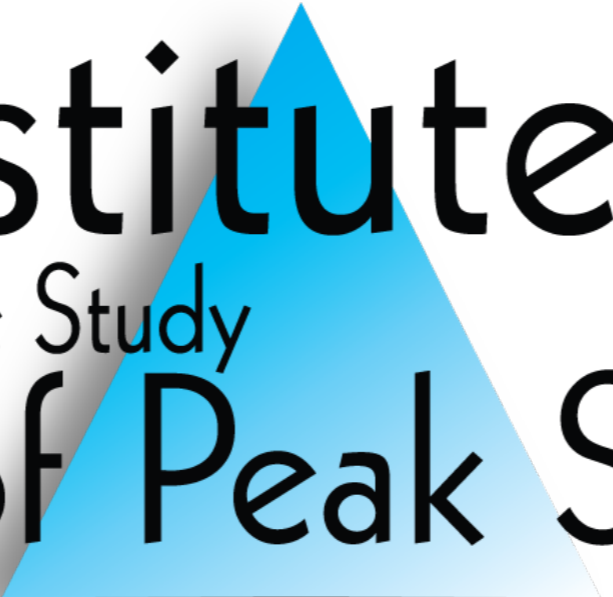


The Primary Cell:

Understanding the sub-cellular basis of
consciousness, spiritual experiences,
trauma and disease

By Dr. Grant McFetridge (Canada), and Tal Laks (Israel)



Institute
for the Study
of Peak States

Evidence-Based Spirituality

- Models of spirituality need to be compatible with modern biology and science.
- They need to incorporate all phenomena - without ignoring 'inconvenient truths'.
- They need to explain all existing data, and predict new.
- Applications are a key test for validity.

Radio waves are also like this...

- Models of electromagnetic waves - you can't see or touch them either, yet you can apply models to make powerlines and cell phones.
- Thus, if a model is correct, we can make things that work, and predict new phenomena - like Einstein's prediction of light bending around the sun.

Key ISPS Models

- **Developmental Events model** for peak states, abilities, and diseases. This model says we can heal disorders (or get peak states) in the present by healing traumas from the past (using regression, EFT, TAT, etc.)
- **Triune Brain model.** This is the key to understanding certain peak abilities and psychological dysfunctions. Our ‘subconscious’ is made up of several biologically different brain structures: mind, heart, body, etc.

More Key ISPS Models

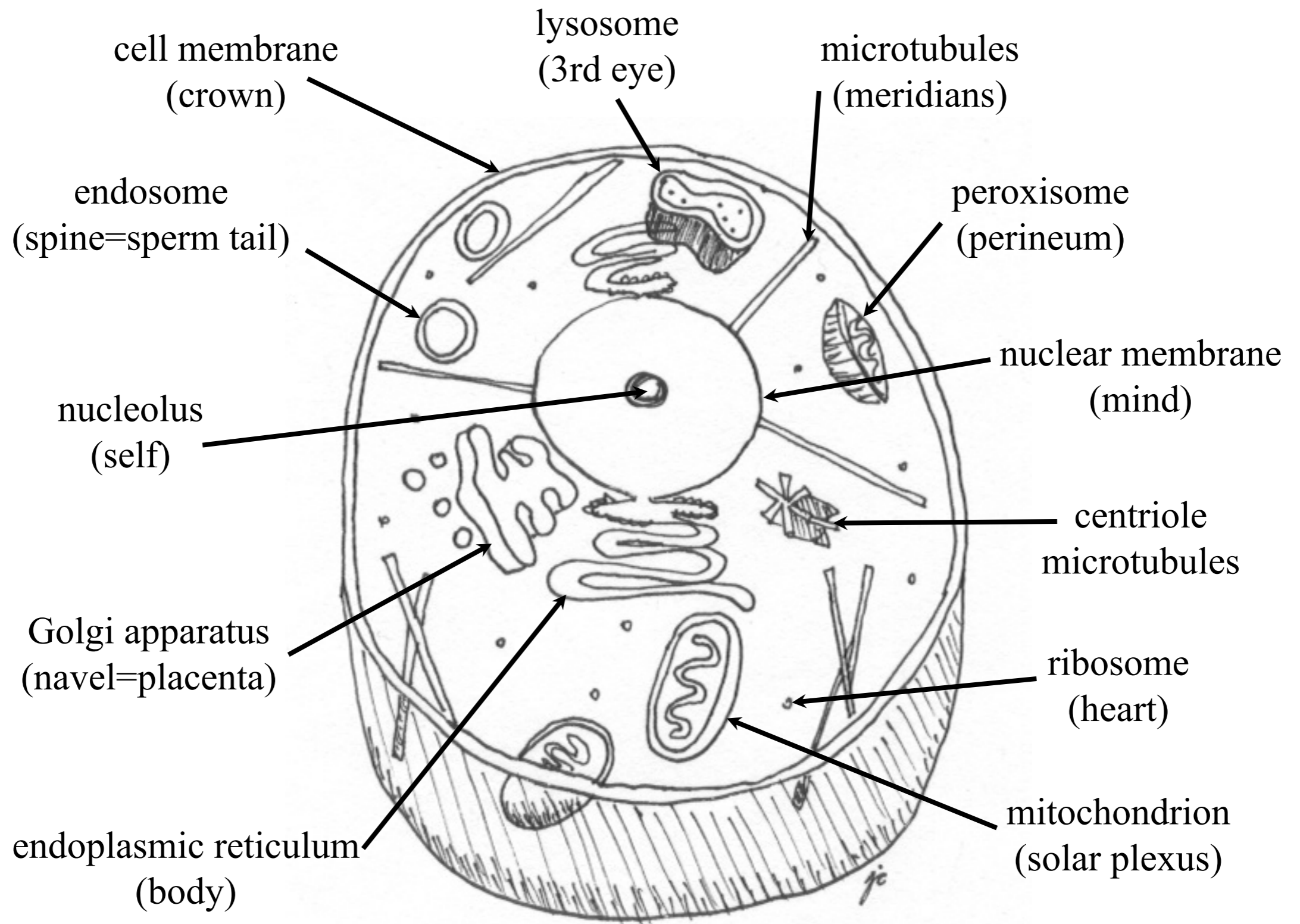
- **Primary Cell model.** We can find the cause of diseases (or find ‘markers’ for peak states) by looking inside the ‘primary cell’ in the present. With this, we can monitor a healing process; or understand how healing techniques work.
- **Transpersonal Biology Model.** This model says that all transpersonal or spiritual experiences have a biological basis in the primary cell.

The Developmental Events Model: Regression, Consciousness and Trauma

- EMDR, TIR and WHH are some commonly used regression techniques. Our own WHH was developed for research, but is also used for treatment.
- Cellular Memory - we are not 'tabula rasa' at birth. Current models can't explain this.
- Peak states of consciousness are lost due to trauma. Peak states represent optimal cell function - they are 'normal' states.
- Consciousness is build from biological components that feel spiritual or sacred.

Triune Brain Model

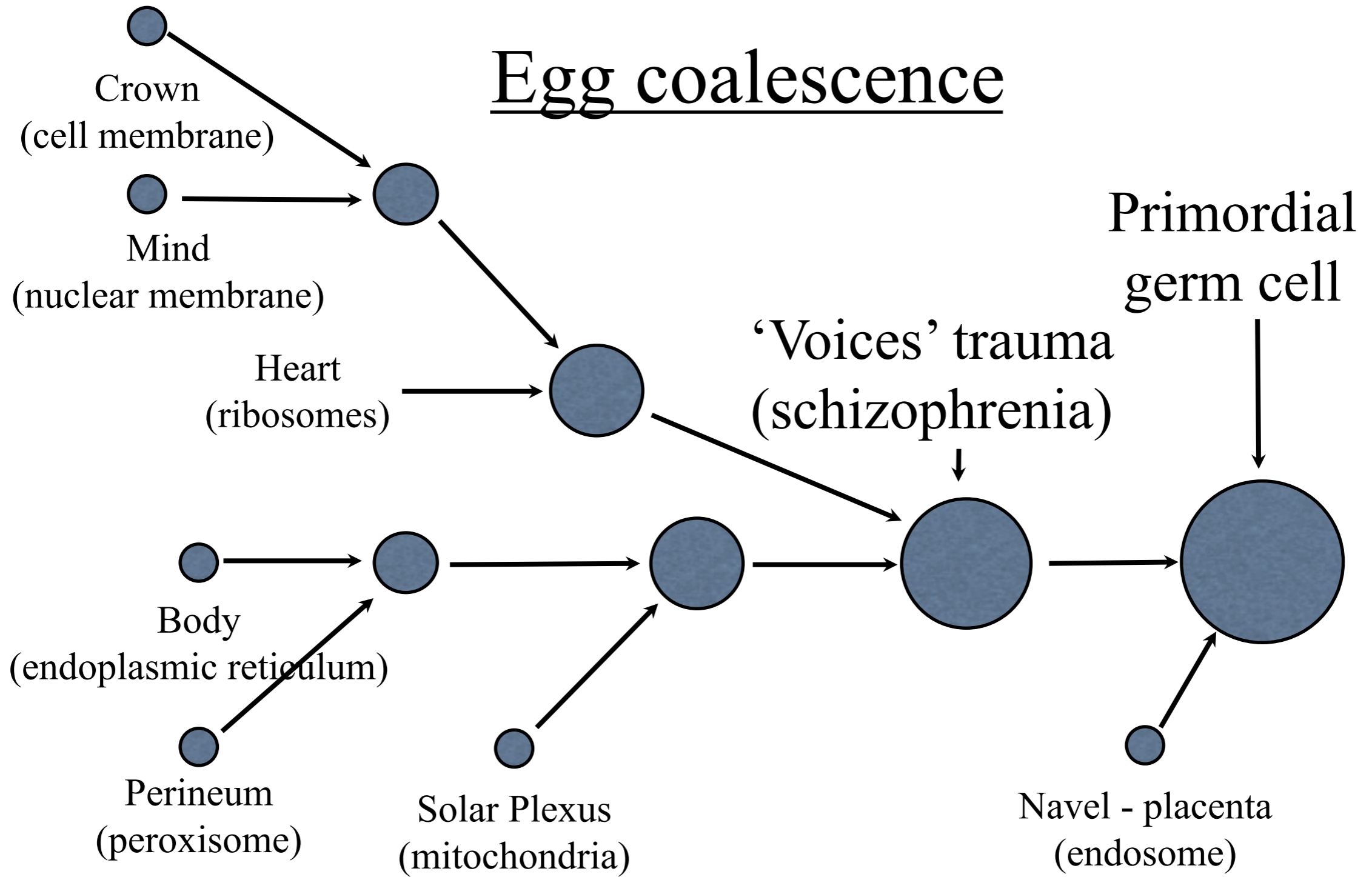
- The ‘triune brains’ (mind, heart, body, etc.) are the origin of the ‘subconscious mind’.
- The triune brains are self aware, and have biologically dictated agendas.
- The triune brains are actually the consciousnesses of different cell organelles.
- The triune brains should actually be unified in one awareness, but rarely are.



Coalescence

- Margulis' Serial Endosymbiotic Theory is recapitulated in human development.
- Seven very different bacteria-like cells (the original triune brain awarenesses) 'coalesce' to form the primordial germ cell.
- Coalescence is not recognized by biologists.
- It is repeatable (via regression), and is useful - it is used to eliminate schizophrenic 'voices'.

Egg coalescence



Prenatal trauma explains a lot, but...

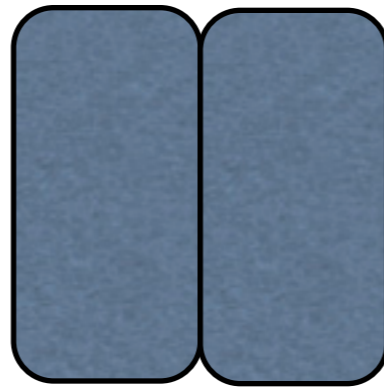
- Some client experiences are clearly in the present, not the past.
- And just what are spiritual/sacred/psychic phenomena? Are they biological?

The Primary Cell Model

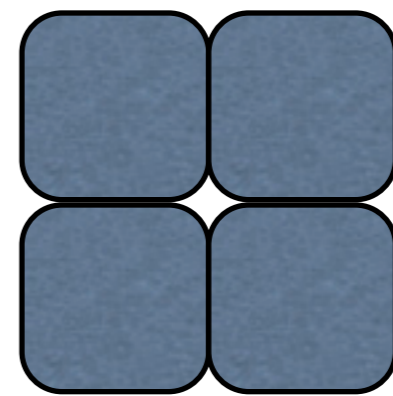
- At conception, your everyday sense of yourself forms.
- However... Just a bit later at the forth cell division, something very unique happens.
- All your awareness consolidates into just one cell - the 'primary cell'.
- There is a severe death trauma at this developmental event. Thus, this event is almost always 'skipped' in regressions.
- We currently believe the primary cell is located in the head.



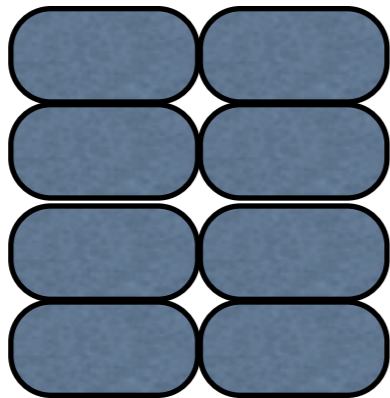
Conception



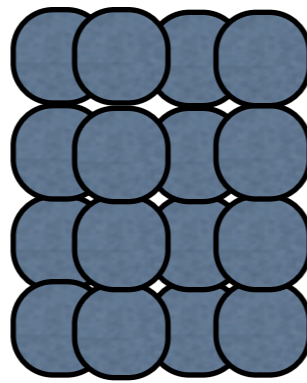
First cell
division



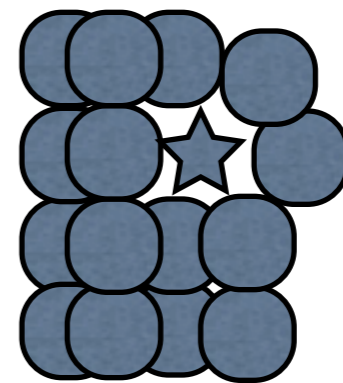
Second cell
division



Third cell
division



Forth cell
division



Creation of the
primary cell

There is a homunculus
after all!

The primary cell interior is superimposed on our perceptions

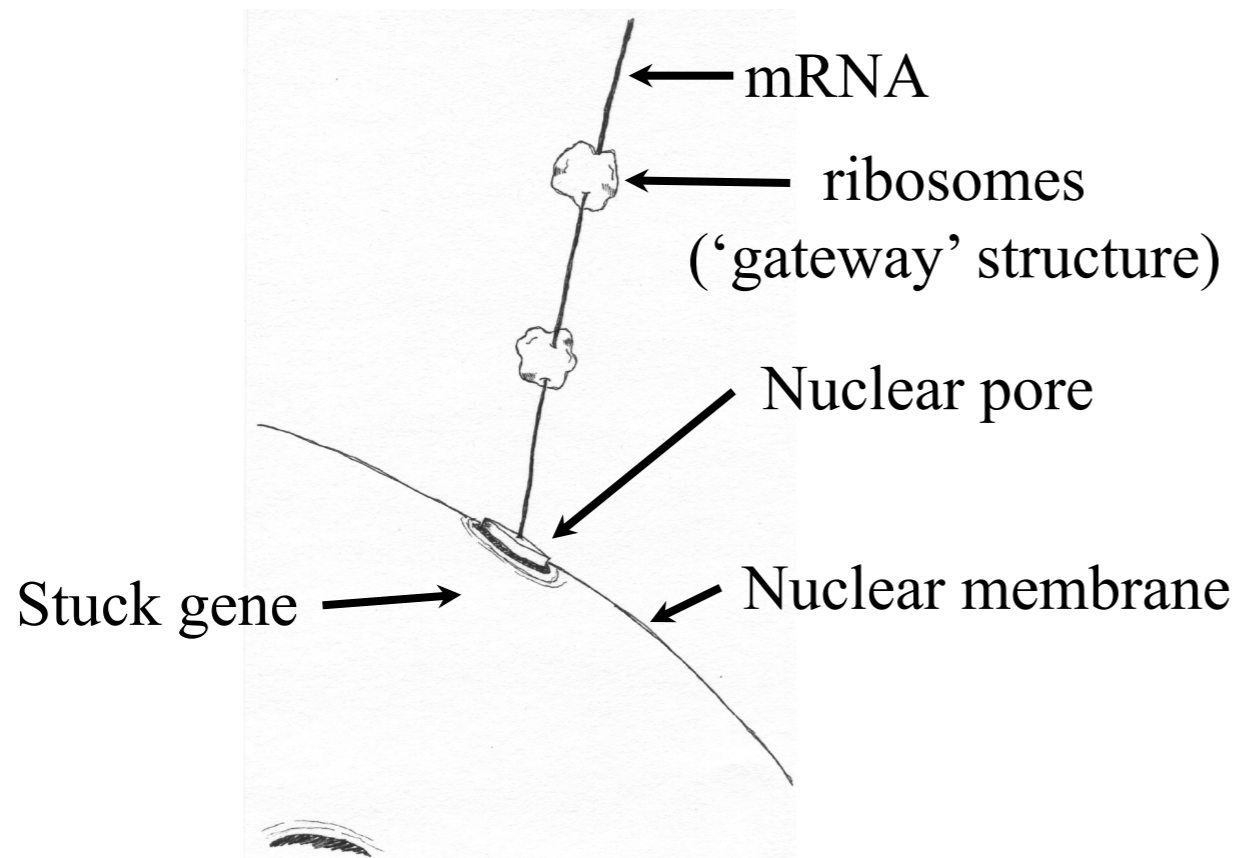
- The primary cell interior is observable by accident or on purpose. A particular ‘peak ability’ is used to see in the primary cell.
- There is a primary cell in all creatures - the Tibetan Buddhists are correct in seeing all life as the same. Only the multi-cellular body parts - the computer’s ‘peripherals’ - differ.
- Spiritual, shamanic or psychic phenomena are based on biological structures in the primary cell. Note: There is a duality of ‘vision’ - either biological, or ‘spiritual’ (or via triune brains’ awarenesses).

Safety Problems

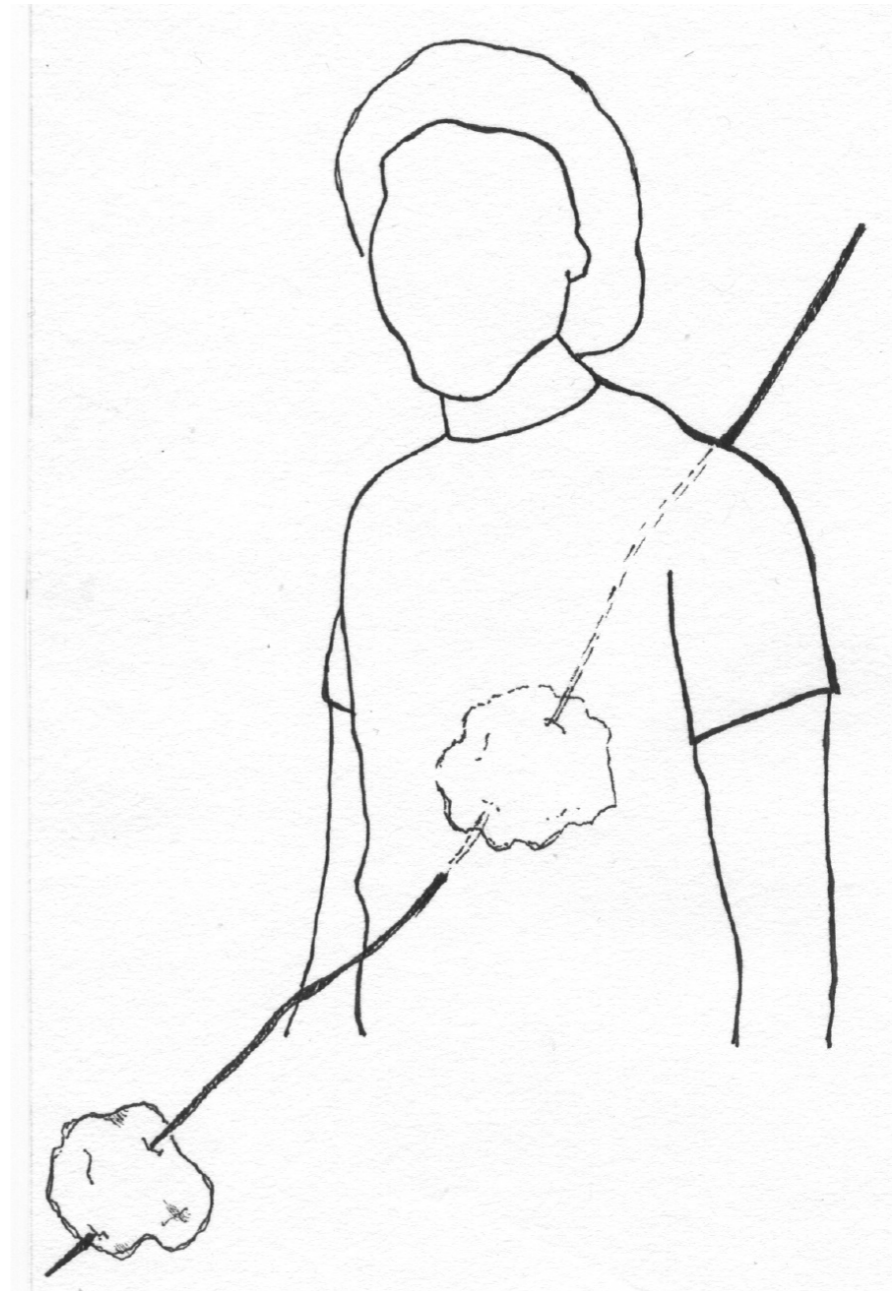
- Working with the primary cell is like being able to look under the hood of your car while it is running. Unfortunately, it is possible to damage yourself by ‘meddling’ with your primary cell.
- Regression too can be dangerous. There are ‘land mine’ developmental events that can trigger severe or fatal problems in some people. And attempts to heal can trigger secondary problems that can’t be ‘turned off’.
- Historically, about 50% of our research staff has been seriously injured or killed during this research.

Applying the primary cell model - What is trauma?

- Trauma is epigenetic damage in the primary cell.
- The histones are damaged, causing the mRNA string to 'jam' in the nuclear pore.
- Ribosomes attach - each time the protean was needed.
- Each ribosome is a gateway to a trauma moment.
- Ribosome trauma sensations are superimposed in our awareness along with our normal, physical perceptions of ourselves & the world.



Trauma 'string'
(in the primary cell)



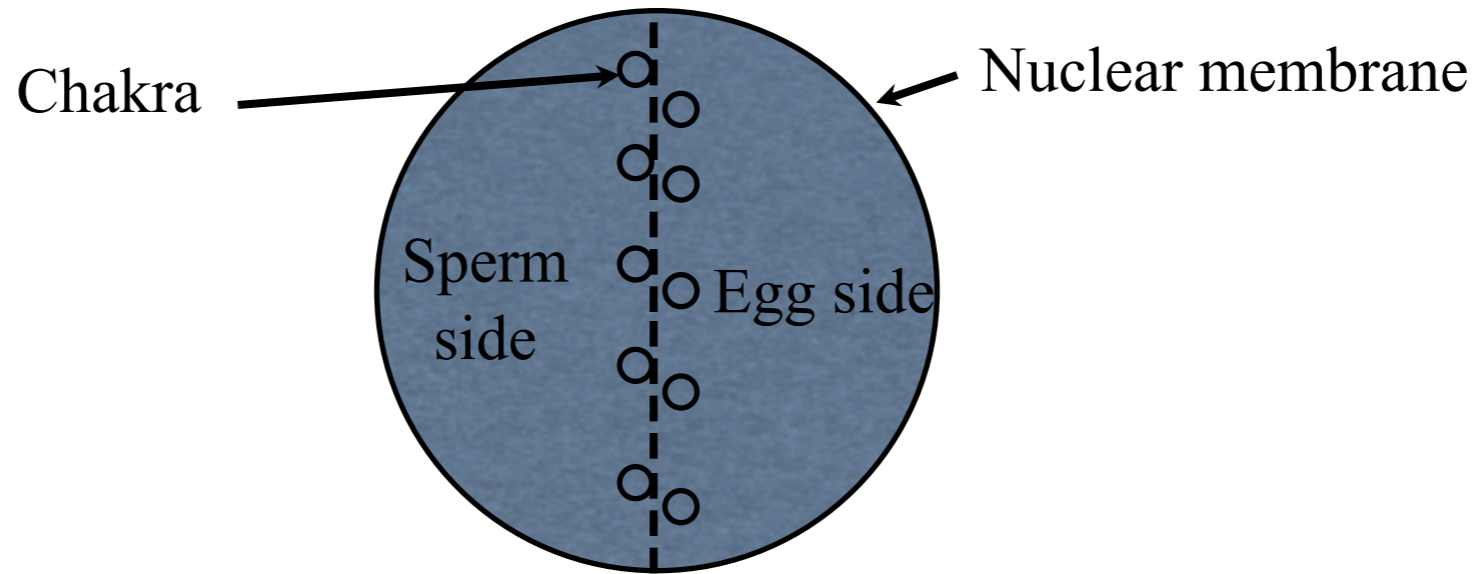
Trauma sensation
(ribosome is superimposed on body image)

The different types of trauma structures

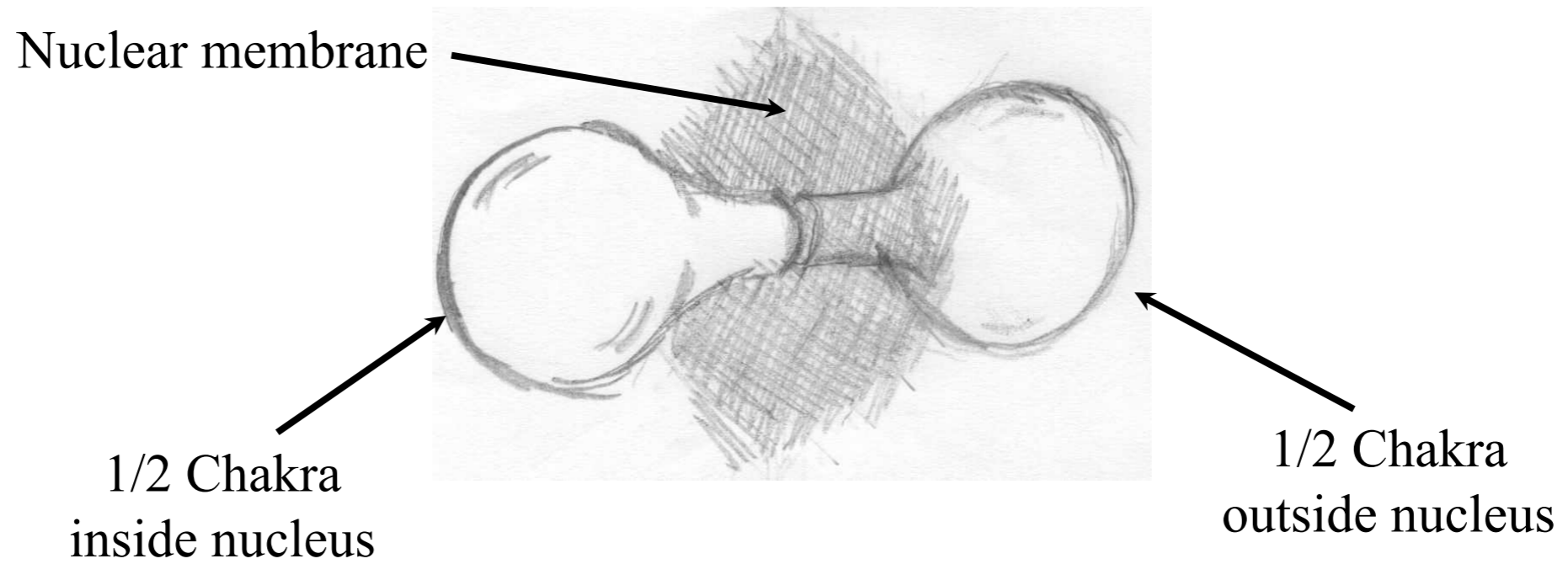
- Stuck perineum and 3rd eye p-organelle genes cause generational traumas (that look like pearls on a string)
- Stuck body p-organelle genes cause body associations (ribosomes in the ER)
- Stuck heart p-organelle genes cause simple trauma (ribosomes on mRNA string)
- Damaged histones from solar plexus gene p-organelle cause vortexes in mitochondrion.
- Past-life traumas exist; these ‘gateway’ structures attach to trauma strings.

What are chakras and meridians?

- Chakras are structures on the nuclear membrane at the sperm/egg junction. There is one per triune brain - but they can be missing or damaged.
- If partially developed, the chakras from the sperm and egg stay separate. If further developed, egg and sperm chakras fuse. If even further developed, they all consolidate.
- Meridians are primary cell microtubules. They attach to the chakras and to the cell membrane.



Nucleus



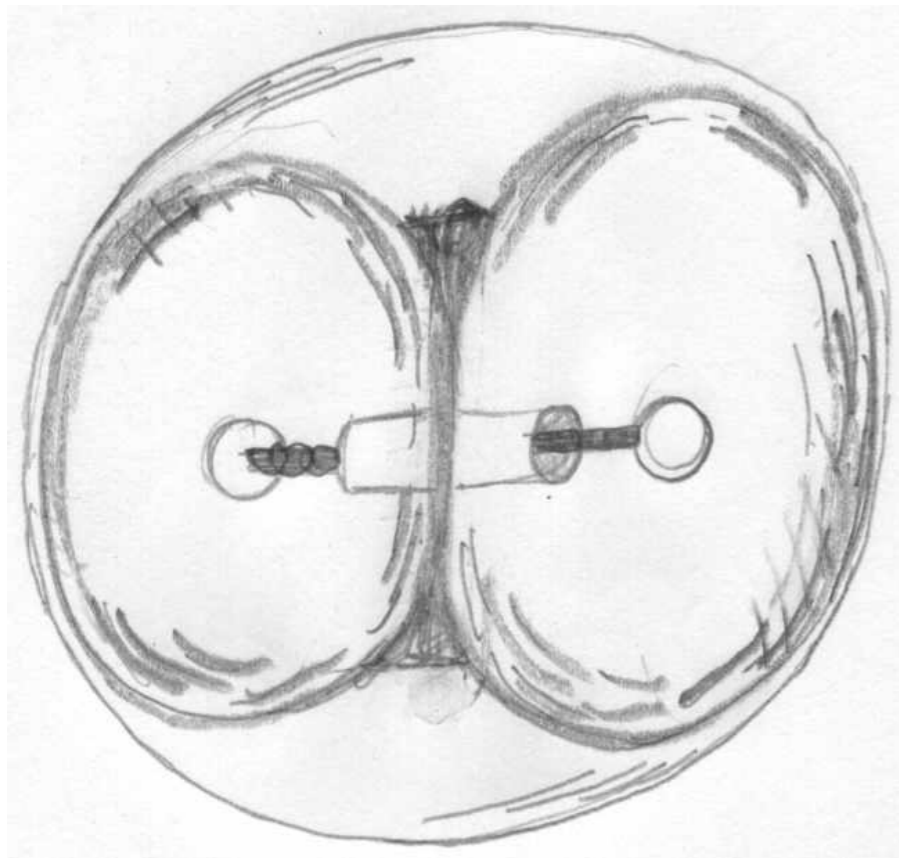
Chakra closeup

How tapping works

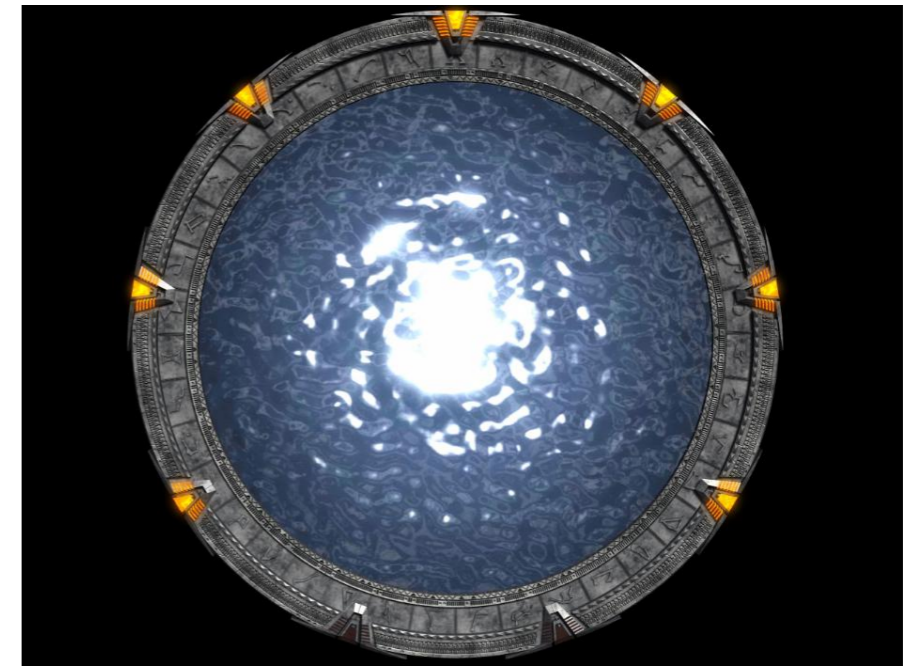
- Tapping stimulates the primary cell tubules, which in turn stimulate the chakra structures.
- This causes ‘broken crystals’ in the chakras (they containing emotional content) to re-connect and lose their trauma feelings.
- This simultaneously affects the trauma strings. Depending on the points tapped, either the ribosomes shrink, and/or the gene histone gets healed. The 9 gamut point is optimum for histones.
- Unlike tapping, regression *directly* affects trauma strings; it indirectly affects the chakra’s ‘broken crystals’.

Where is our self??

- A person's self awareness is inside the 'nuclear core' inside the nucleolus.
- Inside is a 'ring'; a merkaba is inside it; and a pyramid inside that; as well as other structures. Our core self is inside these.
- Our 'self' is build up of various materials that combine serially during early development.



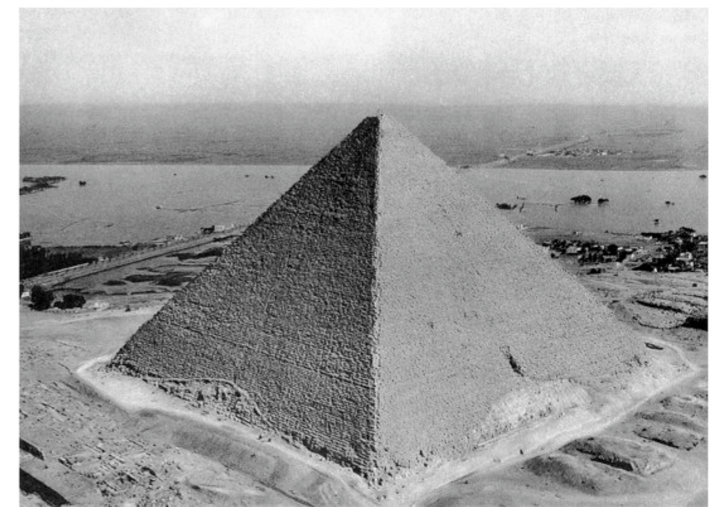
Nuclear core (inside nucleolus)



Ring - inside nuclear core



Merkaba - suspended inside the center of the ring



Pyramid - inside merkaba

Does the primary cell really exist?

- The primary cell model is **very** useful. With the correct peak state, a person can ‘see’ markers for various diseases inside the primary cell.
- *Healing the past* using regression with trauma healing (EFT, WHH, EMDR etc.) changes the primary cell *in the present*.
- Example: MPD can be seen in the primary cell to occur in about 70% of our students. This is caused by problems in the formation of consciousness at the earliest developmental stages.

Applying the models

- Prenatal PTSD (trauma) at specific developmental events is the direct *or indirect* origin of probably all blocked peak states, and of diseases.
- Accessing these traumas and then healing them with *any* trauma technique gives the desired result in seconds to minutes.
- Observations in the primary cell is used to find the cause of the state or disorder; then used with clients to monitor the results to ensure the desired outcome quickly and without ambiguity (if needed).

Clinical Applications

- Using these models allows new, simple, non-drug ways to understand and heal diseases; as well as give people ‘peak states’ and ‘peak abilities’.
- Our new clinics are intended to showcase these applications.
- We only use ‘**pay for results**’ in our clinics; therapists who license our technology also agree to do this. This ensures quality control and is ethically satisfying.
- Treatments for autism, MS, OCD, and diabetes are currently being tested or developed.
- Our treatment for schizophrenic voices is used by our certified therapists now.

