

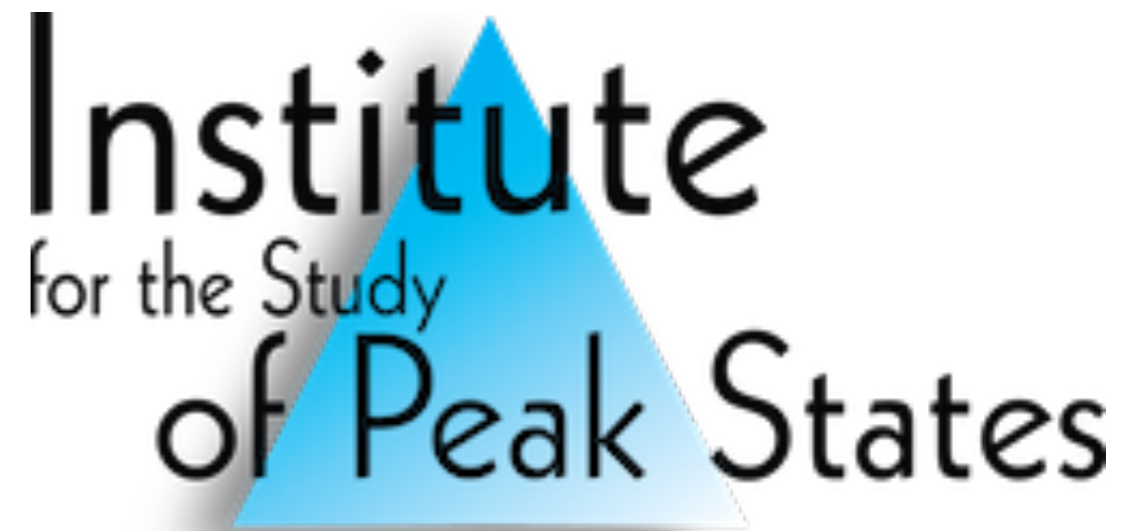
Autism Treatment from the Institute for the Study of Peak States

Dr Grant McFetridge
June 22-24, 2018

Speaker: Dr. Grant McFetridge

- Founder and Research Director for the Institute for the Study of Peak States (ISPS)
 - PhD in Clinical Psychology
 - Health field (primarily research) since 1995
 - Developed a regression technique for trauma elimination called Whole-Hearted Healing.
- Multi-disciplinary background
 - Electrical Engineering, Stanford University, 1984
 - Research and Development Engineer for over 25 years
 - Taught Electrical Engineering at California State University

- Small international institute
- Founded in 1990s
- Original purpose - “Walking in Beauty”
- Have made fundamental discoveries in biology and psychology
- License our techniques to therapists
- ‘Pay for results’ with their clients



Institute
for the Study
of Peak States

What we will cover:

- Our autism research journey
- Testing hypotheses about vaccines and brain damage
- ISPS approach to treating the autism infection
- Premature births
- Asperger's Syndrome
- Using other treatment modalities for autism

Our involvement in autism research was by accident

- Our research started in 1998
- A friend and ISPS colleague, Wes Gietz, (pictured right with Dr Deola Perry) had an autistic son
- Autism starts during the first stage of birth



Our first autism process in 2000

- Healing epigenetic damage in the mother heals autism in their child (healing it in the father has no effect on autism)
- After some research, we derive specific music, phrases, and imagery to regress the mother to her own birth event
- We used the well-known Emotional Freedom Technique (EFT) to heal targeted birth trauma in the mother
- Dr. Deola Perry and I developed our first autism process

Emotional and developmental changes from the first autism process

- In 2000, our first test was with five autistic children - four were successfully healed of autism (the fifth mother quit the program before finishing the treatment)
- The mother suddenly felt an emotional connection to their child and the children suddenly had emotions and wanted to connect with their mother
- The child immediately went through early childhood developmental states (very quickly) and completed them in less than a year - including learning to speak

Linda Johnson - mother of son who had autism

[Linda Johnson testimonial video](#)

Autism misdiagnoses - Denmark example

- We trialled a new treatment in Denmark in 2008 with 10 children diagnosed with autism
 - 3 children had autistic symptoms
 - 5 children had a range of other issues
 - 2 children - could not find any problems
- Key finding - many children with an autism diagnosis are not autistic
- Implication - we want a treatment than covers a range of disorders in children

Asperger's syndrome (AS)

- Asperger's syndrome is not autism
- A person with Asperger's syndrome is surrounded by what feels like a glass test tube
- Some people have Asperger's syndrome symptoms on only one half of their body and don't realize it
- The treatment is fairly simple and results in the elimination of the glass wall sensation, which consequently eliminates the Asperger's syndrome symptoms
- We offer this on a 'pay for results' basis.

A brain damage hypothesis

- In 2008 we tested the hypothesis that traumatic brain injury (TBI) caused autism
- Our conclusion was that TBI is not causing autism
- A TBI treatment might eliminate symptoms in children who were incorrectly diagnosed with autism
- After a successful autism treatment, the child might also need a following TBI treatment
- ISPS offers a TBI treatment on a 'pay for results' basis

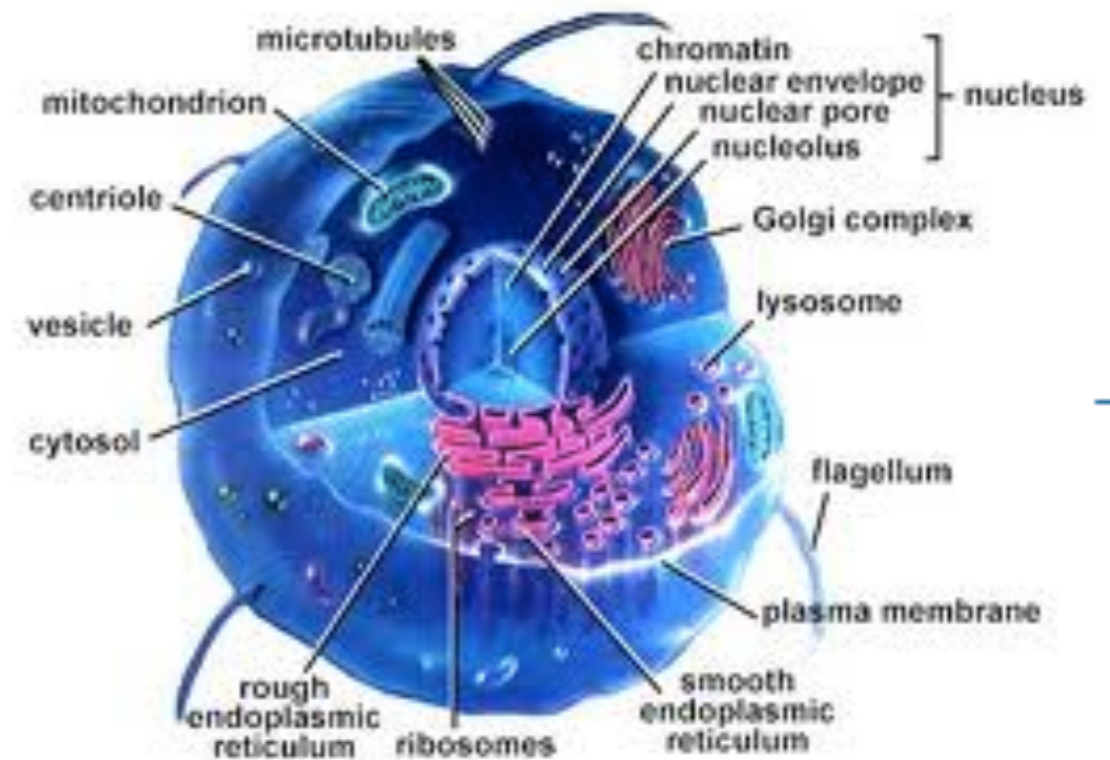
The vaccine hypothesis

- Vaccines were not causing autism
- Vaccines were infecting severely autistic children but eliminating the infections made no difference to their symptoms
- Children who had *not* been vaccinated would still get severe autism

Discovering the “primary cell”

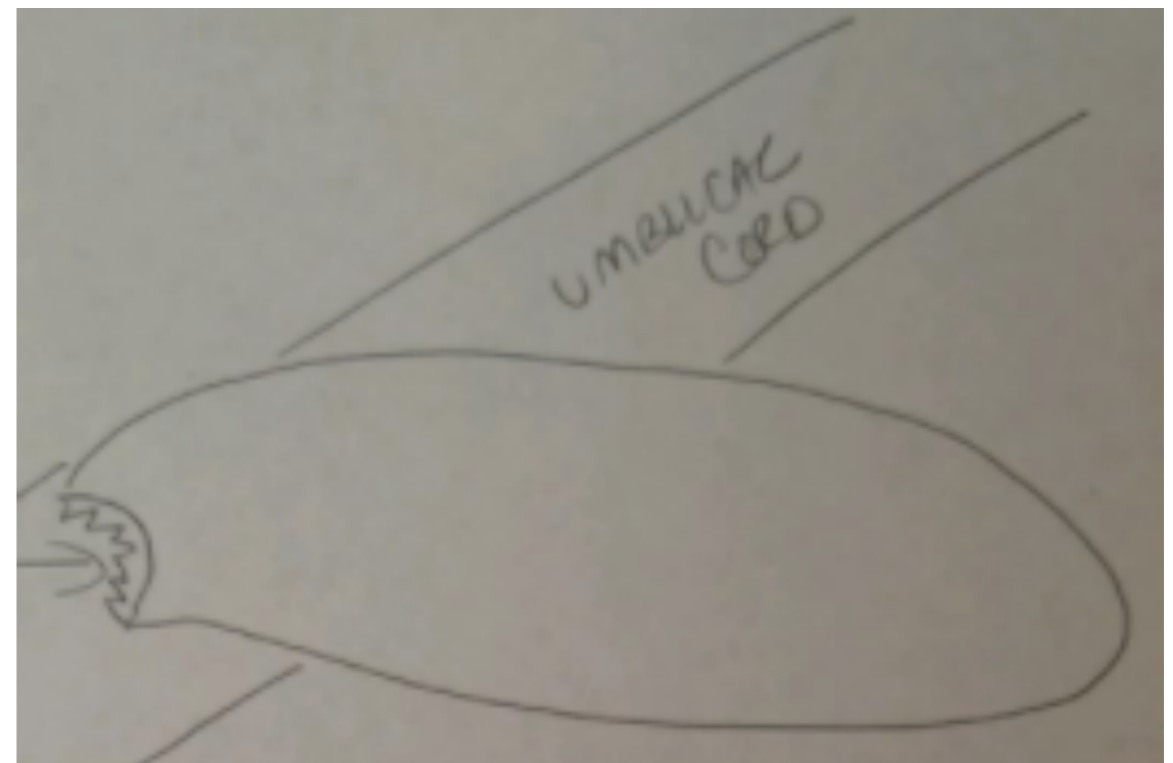
- The ‘primary cell’ is where consciousness is in the body
- Problems in this cell are experienced as sensations in one’s body
- The cell sets the pattern for all other cells in the body

The Primary Cell Model



Finding an autism Rosetta Stone

- Linda Johnson became our Rosetta Stone to finding the cause of autism
- The primary cell nucleus is the subcellular analog to the brain - damage in the nucleus (especially the nucleolus) shows up as dysfunction in the brain
- People who regress to this event 'see' a body image superimposed on the image of the nucleus
- Pictured right is a sketch by a mother who observed the autism bacteria during birth



Stages of the autism infection at birth

1. Both mother and fetal child were infected with the autism bacteria
2. Initial stage of birth triggers survival rage in the mother
3. The autism bacteria damages the child's nucleolus
4. The fetal child immediately starts feeling 'autistic' to the mother

‘Seeing’ autism in the nucleolus

- With a particular peak ability, holes can be ‘seen’ in the brain of a person with autism
- This is actually an image of damage in the nucleolus
- People with severe autism have much of their ‘brain’ material missing
- These observations allowed us to quickly test new autism treatments.
- Our TBI treatment could not replace the missing pieces of the nucleolus

Seizures

- Epileptic seizures were caused by another bacteria living in the gaps (caused by the autism infection) inside the nucleolus

Treating the autism infection

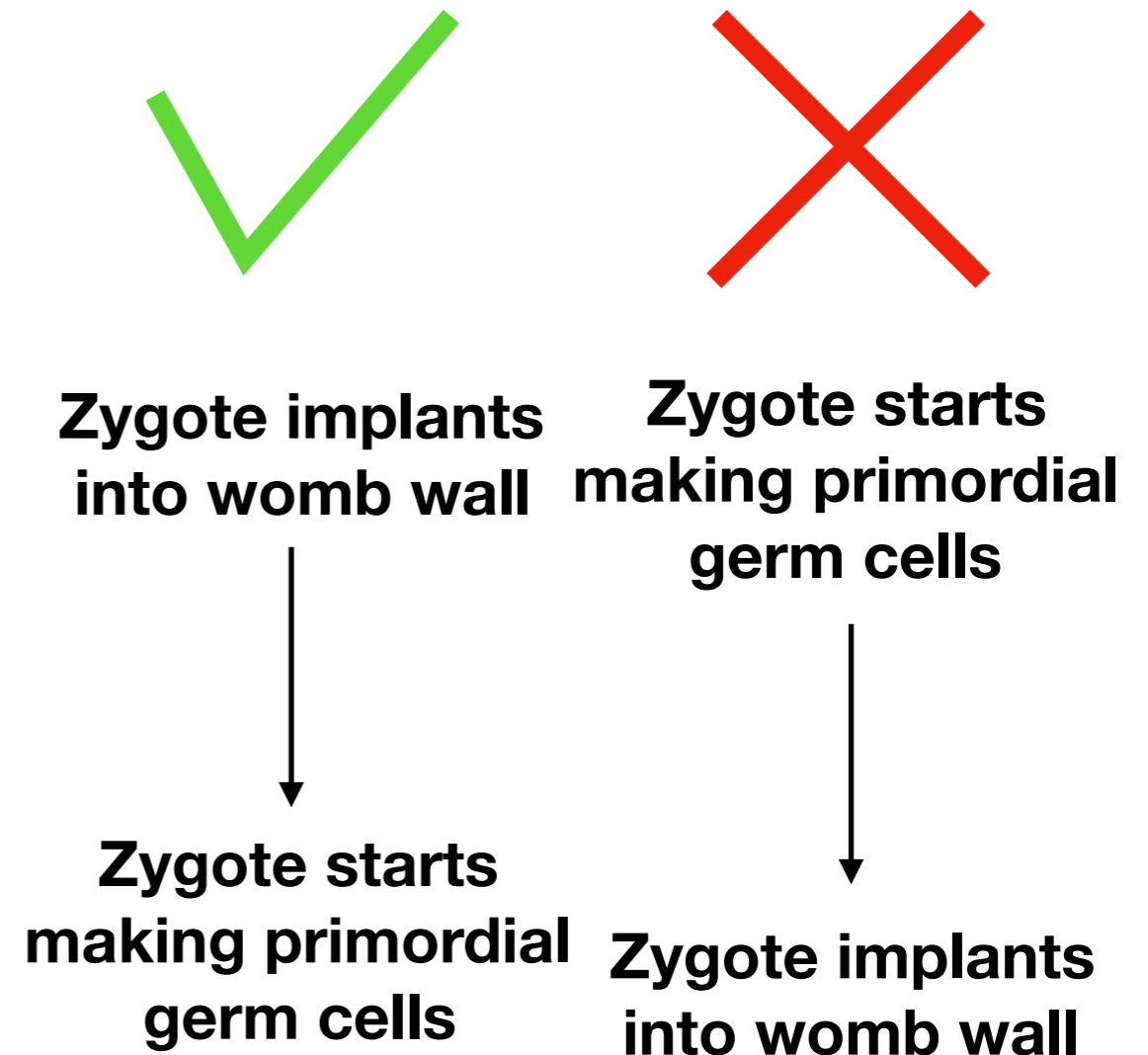
- Psycho-immunology treatments use psychological-like techniques to make a person immune to a pathogen
- In 2018, we found a psychological technique to make mother's immune to the autism infection
- The epigenetic damage that makes a person susceptible to the autism bacteria is carried by women
- Making the mother immune to the autism bacteria will also make the child immune. However, making the father immune will not make his child immune.

The mother's rage during birth

- Healing the autism pathogen is not enough - we also needed to eliminate the rage towards the child during birth
- Our first successful treatments in 2000 worked by eliminating the mother's birthing rage
- The mother's rage and survival aggression was directed towards the male part of her child
- The origin of the mother's birth rage was at conception - between the egg (female) and sperm (male)

Premature births

- Premature births are strongly correlated to autism and other problems in children
- The parental zygote (the autistic mother later in life) starts making her primordial germ cells before fully implanting
- This creates suffocation trauma in the newly formed organism and causes a variety of problems and diseases



Conventional medical techniques

- A blood test could be derived to test for the autism pathogen
- Drug treatments might work to repair autism damage, but would certainly be successful if used on pregnant mothers before birth

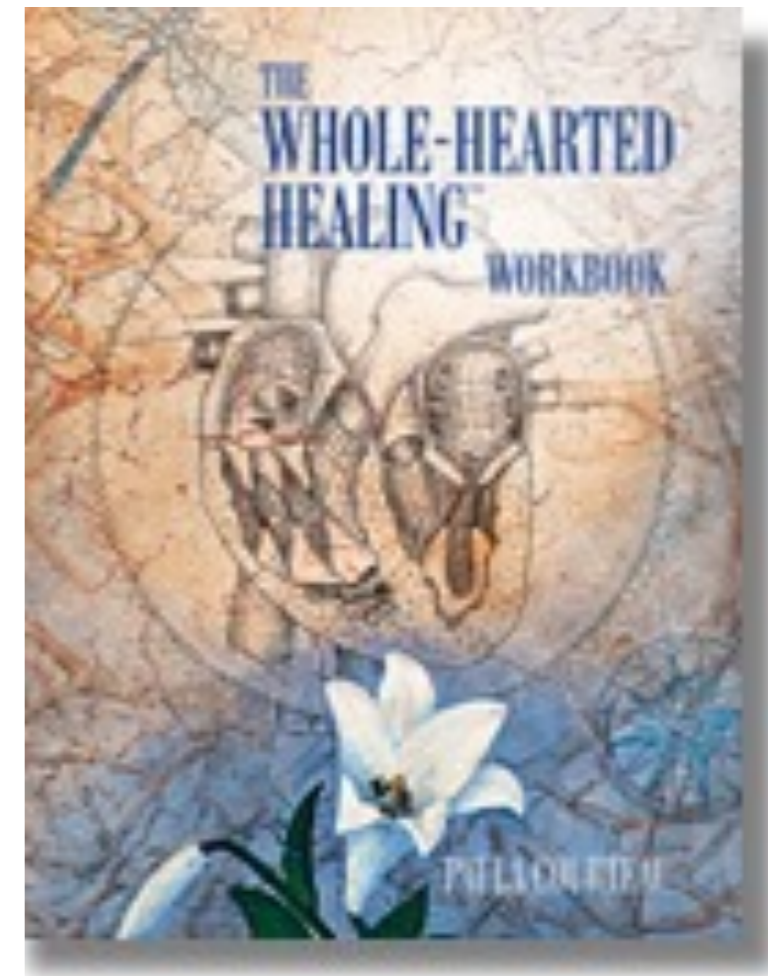
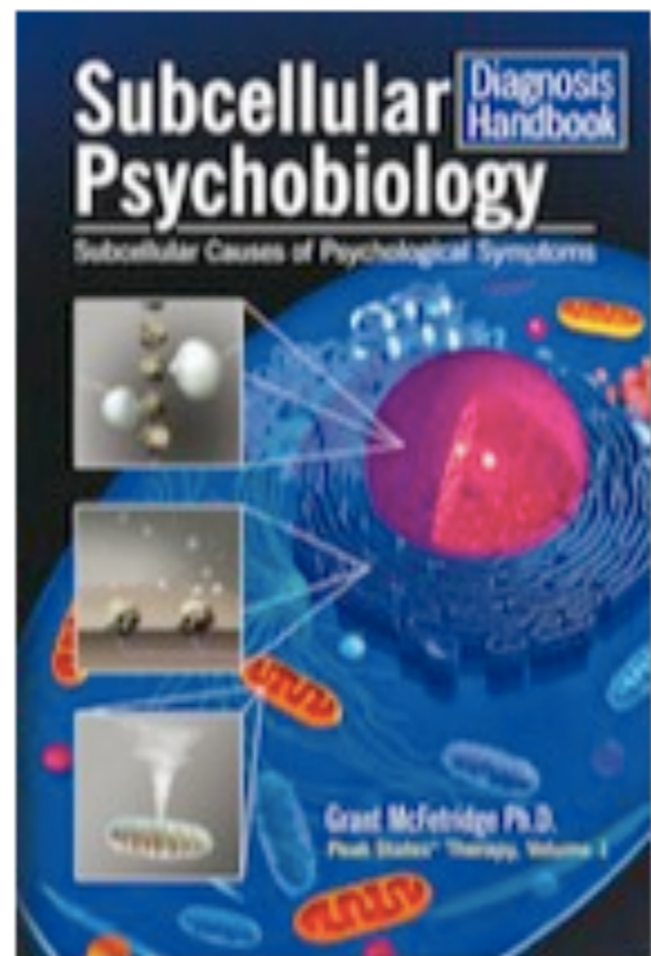
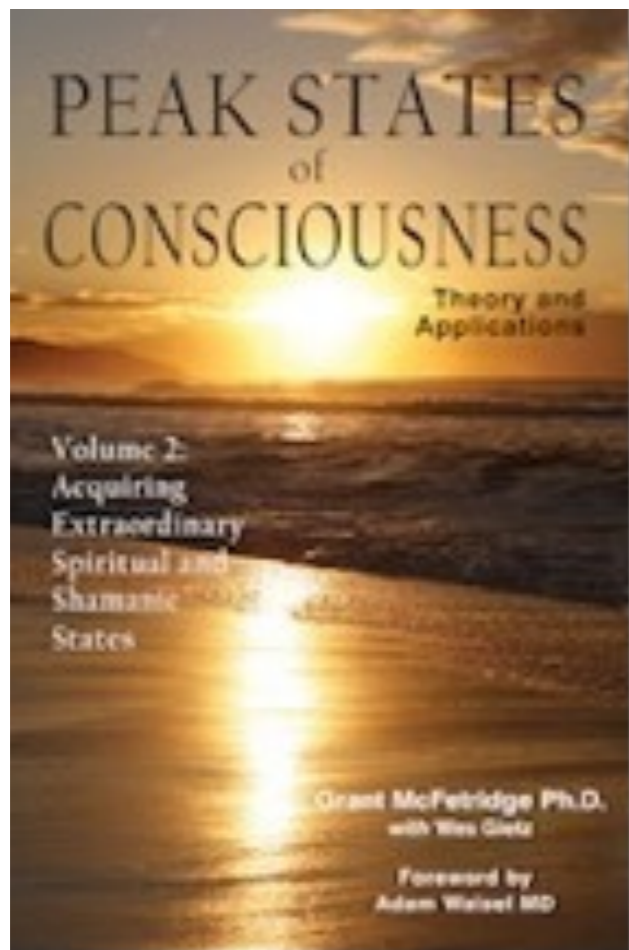
Using other treatment modalities for autism

- Other autism treatment modalities are a very good thing
- They may be addressing other diseases included in the category of autism
- They may use different healing mechanisms on autism that could be more effective

Summary

- Autism is caused by a bacteria that damages the nucleus of the primary cell
- A psycho-immunology treatment to get rid of the pathogen works
- The mother is unconsciously stimulated into rage during the birth of her child, which triggers autism damage
- A treatment involving early developmental events eliminates this rage issue
- Asperger's syndrome is a completely different disease unrelated to autism
- Children with traumatic brain injury can also be treated so that their symptoms are eliminated

Recommended reading



Questions

